

Building Quality with Form and Function



The Remittal West Production Sale
Saturday, October 13, 2012 - 1:00 p.m.

Olds, Alberta, Canada

**Remittal
west**

Real-time viewing and bidding is available from www.liveauctions.tv.

Welcome to Remital West Building Quality With Form and Function!



Zachary, Isaac, Emily, Bryan, Annette

Welcome to the 2012 Remital West Production Sale, the first we have offered on our own since the historic 2008 Remital Dispersal. Although we are not near the size of herd we were at that time, we have as a family made the absolute commitment and mandate to breed an elite group of Herefords, individuals that would be able to compliment any herd. Like any endeavor the challenges were many. We do feel fortunate though that each step we took we could see the program coming back together. We sourced the best we could from the Remital genetics and combined this with what we felt were some of the top young bulls coming up in the breed. The result of this allowed our program to have the strength to garner the Canadian National Agribition Premier Exhibitor award for both 2010 and 2011, the 2011 Grand Champion Female and Grand Champion Bull at the 2011 Canadian Jr. National, and the 2011 Canadian Western National Grand Champion Female.

both the Grand Champion Female and Grand Champion Bull at the 2011 Canadian Jr. National, and the 2011 Canadian Western National Grand Champion Female.

The biggest step forward has come in the last two years as the females we identified as elite donor candidates were mated to our young up and coming sires, namely Wonder and Tailor Made. This progression came to the forefront at the recent 2012 World Hereford Conference that saw the Remital West show team win Grand Champion Bull, Grand Champion Female Rancher Day, Grand Champion Bull Jr. show, Reserve Grand Champion Female Jr. show, Premier Breeder, Premier Exhibitor, Champion Breeders Herd, Champion Progeny of Dam, Champion Jr. and Sr. Get of Sire, nine divisional champions open show, and four divisional champions in the jr. show.

In our commitment to our mandate to breeding and supplying only the best to the industry we are offering before you the results of this mandate. Almost every lot in this sale offering is an offspring of an elite donor female either through their ET progeny or their natural calves or in the case of several lots are the elite donors themselves. Many of these individuals even though young have already become winners. We believe that every male offered in this sale is a bona fide future herd sire, we believe every female offered in this sale is legitimate future donor material. Study for your self the many opportunities this sale offering holds. It may not be the sale to purchase a semi load, but it is the sale to purchase an individual that will make a difference! We welcome you to come enjoy some of our hospitality, view some great Herefords, and to visit and share ideas with some of the best cattlemen from around the world.

If we can be of any assistance on or before sale day please let us know.

See you sale day, Saturday October 13, 2012.

The Latimer's ~ Bryan, Annette, Emily, Isaac, Zachary



2012 World Hereford Conference



Bobby Hull accepting his induction from Gordon Stevenson into the Canadian Hereford Honor Role. Congratulations from all the Latimer families.



REMITALL WEST GAME DAY ET 74Y
2012 World Hereford Conference Grand Champion Bull - owned with Glengrove Farm MO and Bacon Herefords AR. His dam sells as lot 17, his full sister sells as lot 18, his full brother sells as lot 5.



REMITALL RITA 13T
2012 World Hereford Conference Rancher Day Grand Champion Female. She sells as lot 22, her sons sell as lots 1 and 4.



2012 World Hereford Conference Champion Breeders Herd - Game Day 74Y, Marvel 24X, Catalina 77Y, Marvel 12Z lot 20.



2012 World Hereford Conference Champion Get of Sire - Sired by SHF Wonder M326 W18 ET - Game Day 74Y, Catalina 77Y, Esposito 7Z lot 7.



2012 World Hereford Conference Champion Jr. Get of Sire - Sired by SHF Wonder M326 W18 ET - Esposito 7Z lot 7, Bently 21Z lot 10, Haylee 8Z lot 23.



2012 World Hereford Conference



REMITALL WEST MARVEL ET 12Z
2012 World Hereford Conference Sr. Heifer Calf
Champion she sells as lot 20.



REMITALL WEST ESPOSITO ET 7Z
2012 World Hereford Conference Sr. Bull Calf
Champion he sells as lot 7.



REMITALL WEST CATALINA ET 77Y
2012 World Hereford Conference Jr. Champion
Female, a full sister sells as lot 25 and a full
brother as lot 7.



REMITALL WEST MARVEL ET 27Z
2012 World Hereford Conference Jr. Heifer Calf
Champion, a full sister sells as lot 20.



REMITALL WEST YELLOW ROSE 2Y
2012 World Hereford Conference Res. Sr. Ylg
Champion Female. A maternal brother sells as
lot 3. Her dam has embryo's that sell as lot 32.



REM DORBAY MISS HAYLEE 8Z
2012 World Hereford Conference Res. Sr. Heifer
Calf Champion, she sells as lot 23.

2012 World Hereford Conference



2012 World Hereford Conference Champion Progeny of Dam - Remitall Marvel ET 120S, she sells as lot 19. Her progeny sell as lot 6, 16, 20, and 21.



REMITALL WEST MARVEL 24X
2012 World Hereford Conference Res. 2 year old Champion Female, her son sells as lot 10.



REMITALL WEST CHELIOS ET 32Z
2012 World Hereford Conference Jr. Bull Calf Champion, he sells as lot 8.



Canadian Hereford Juniors participating at the 2012 World Hereford Conference Canadian Jr. National. Congratulations on a great show.



Zachary Latimer showing Remitall West Marvel ET 12Z to the WHC Jr. Show Reserve Grand Champion Female award. She sells as lot 20.



Emily Latimer showing Remitall West Game Day ET 74Y to the WHC Jr. Show Grand Champion Bull award. His dam sells as lot 17, a full brother as lot 5 and a full sister as lot 18.



REMITALL-WEST EBERLE 29Z

C02967633

REM 29Z

February 3, 2012

AH YANKEE 10S P A42732198

JDH 10S YANKEE 39X

AH JDH WRANGLER QUEEN 22T ET

REMITALL PATRIOT ET 13P

REMITALL RITA 13T

REMITALL RITA 246K

REMITALL ONLINE 122L

CRR D03 VIOLET 349

JDH 15 WRANGLER 25L

AH MS LADY QUEEN 14L

REMITALL OLYMPIAN ET 262L

REMITALL GINGER 23G

REMITALL HERITAGE 89H

REMITALL EMPRESS RITA 66E



REMITALL RITA 13T

Dam of lot 1. Rita was recently named the 2012 World Hereford Conference Rancher Day Grand Champion Female with Eberle 29Z at side. She sells as lot 22 and is the dam of Constructor 21X that sells as lot 4. Rita has an impressive ave. weaning ratio of 115 on her natural calves.

CE	BW	WW	YW	MM	TM	MCE	SC	CW	Stay	MPI	FMI	FAT	REA	MARB
-4.6	7.1	68.0	112.9	23.8	57.8	2.0	1.0	121.3	-	-	173.0	-0.015	0.55	0.13

BW: 89 lbs

205 Day Wt: 970 lbs adj.

W.D.A. 4.73

Truly one of the most remarkable bull calves to come from the Remitall West program. Eberle 29Z had everyone asking about him at the 2012 WHC. This calf excels in his muscle shape, his width, his depth and length of body, his eye appeal, and his pigmentation. Eberle 29Z was along side his dam when she was named the 2012 WHC Rancher Day Grand Champion Female. We believe Eberle 29Z has the power and strength to be a contender and the genetics to be a breeding force. *Selling half interest and half possession.*



REMITALL-WEST CONSTRUCTOR 21X

Maternal brother to lot 1. Constructor 21X was the 2011 Canadian Jr. National Grand Champion Bull and was a 2011 Agribition class winner. He is featured as lot 4.



JDH 10S YANKEE 39X

C02960482

39X

February 12, 2010

REMITALL ONLINE 122L
AH YANKEE 10S
 CRR D03 VIOLET 349

JDH 15 WRANGLER 25L
AH JDH WRANGLER QUEEN 22T ET
 AH MS LADY QUEEN 14L

REMITALL EMBRACER 8E
 REMITALL CATALINA 24H
 SHF INTERSTATE 20X D03
 KJ 2410 VIOLET 392F
 JDF 16D WRANGLER 15
 JDH MS LUTE 18J
 AH POWER HITTER 10H
 AH MS BANNER QUEEN 19H



REMITALL-WEST EBERLE 29Z

Son of Yankee lot 2 and feature lot one in this sale. A very popular calf with all the breeders and visitors at the 2012 WHC.

CE	BW	WW	YW	MM	TM	MCE	SC	CW	Stay	MPI	FMI	FAT	REA	MARB
-1.5	7.2	67.4	115.2	23.9	57.6	2.9	0.9	114.0	-	-	192.3	-0.030	0.55	0.06

Yankee 39X has a powerful expression of muscle over his top line and down into his lower rear quarter, as good as you could hope to find in a bull. He has a wonderful head carriage and natural eye appeal to him. He is short marked and fully pigmented. Yankee has been used naturally at Dorbay, Remitall West and Harvie Ranching where he performs very well in pasture conditions. His first son born at Remitall West is the lead off lot 1 bull of this sale. Owned by Remitall West AB, Dorbay Polled Herefords ON, Harvie Ranching AB and Delaney Herefords MN. *Selling 3/4 interest and full possession.*



JDH 10S YANKEE 39X

Purchased in the 2011 Denver sale for \$21,000 from Delaney Herefords where he was the lead off member of their reserve champion carload.



REMITALL-WEST MESSIER 75Z

C02967648

REM 75Z

March 6, 2012

REMITALL ONLINE 122L
REMITALL-WEST CONSTRUCTOR 21X
 REMITALL RITA 13T

REMITALL EMBRACER 8E
 REMITALL CATALINA 24H
 REMITALL PATRIOT ET 13P
 REMITALL RITA 246K

REMITALL ROUTE 66 ET 346R
DORBAY MISS WHITNEY 411W
 DOR VIEW HAWKS GAL 19R

MC RANGER 9615
 REMITALL CATALINA 24H
 REMITALL NIGHTHAWK 100N
 EJM MISS KOOTENAY GAL 54M



DORBAY MISS WHITNEY 411W

Dam of lot 3. 2011 Canadian Jr. National Grand Champion Female and 2011 Canadian Western National Grand Champion Female. A maternal sister to lot 3 - Remitall West Miss Yellow Rose 2Y was the 2012 WHC Res. Sr. Ylg Champion female.

CE	BW	WW	YW	MM	TM	MCE	SC	CW	Stay	MPI	FMI	FAT	REA	MARB
-4.3	7.3	67.3	116.6	18.2	51.9	2.6	1.0	137.7	-0.5	-	185.0	-0.021	0.56	0.15

BW: 97 lbs

205 Day Wt: 898 lbs adj.

W.D.A. 4.38

Youngest calf in the sale but is here because we believe he has such a great future. Messier shows tremendous bone, width of pins, depth of body, and a wonderful head carriage. His dam 411W a National Champion is a powerhouse for udder quality, an easy doing ability and femininity. His sire Constructor 21X was the 2011 Canadian Jr. National Grand Champion Bull as well as a 2011 Agribition Class winner. Messier 75Z is a unique combination of National Champion parents including a host of National Champions back in his pedigree including Online 122L twice, Route 66 346R, Patriot 13P, and Catalina 24H three times. *Selling half interest half possession.*



DORBAY MISS WHITNEY 411W

Dam of lot 3 shown here winning the 2011 Canadian Jr. National Grand Champion Female.



4

REMITALL-WEST CONSTRUCTOR 21X

C02940960

REM 21X

February 22, 2010

REMITALL EMBRACER 8E
REMITALL ONLINE 122L
 REMITALL CATALINA 24H

REMITALL ACME 10A
 PLAIN LAKE BELLE 20X 117P 5B
 MM RSM STOCKMASTER 512
 REMITALL CATALINA 139C

REMITALL PATRIOT ET 13P
REMITALL RITA 13T
 REMITALL RITA 246K

REMITALL OLYMPIAN ET 262L
 REMITALL GINGER 23G
 REMITALL HERITAGE 89H
 REMITALL EMPRESS RITA 66E

CE	BW	WW	YW	MM	TM	MCE	SC	CW	Stay	MPI	FMI	FAT	REA	MARB
-2.9	6.5	72.8	126.4	22.3	58.7	5.4	1.3	135.6	-0.9	178.1	187.2	-0.011	0.64	0.18

BW: 92 lbs

205: 913 lbs adj

YW: 1,488 lbs adj

W.D.A. 4.45

Constructor 21X is one of the most impressive individuals you will find in the breed. He is a massive bodied bull with muscling that would be the envy of even the most discriminating carcass enthusiast. He is tremendously sound and good natured. The kids handle him with ease. A royally bred bull that includes his sire the legendary two time Denver champion bull Online 122L, two time Canadian National Champion Bull Patriot 13P, Canadian National Champion Bull Olympian 262L, and his dam Rita 13T the recently crowned Grand Champion Female of the 2012 WHC Rancher Day show. Constructor 21X has the power to be a sire that will truly make a difference, one that will move you a head. *Selling 3/4 interest full possession. Possession begins after 2012 Agribition.*



REMITALL RITA 13T

Dam of lot 4. Rita was recently named the 2012 WHC Rancher Day Grand Champion Female and is also the dam of feature lot 1 bull calf Eberle 29Z. Rita 13T sells as lot 22 and has feature embryos that sell as lot 33.



REMITALL-WEST CONSTRUCTOR 21X

Pictured winning the 2011 Canadian Jr. National Grand Champion Bull.



REMITALL-WEST ON FIRE ET 81Y

C02955016

REM 81Y

April 26, 2011

KCF BENNETT 3008 M326
SHF WONDER M326 W18 ET
 SHF GOVERNESS 236G L37

REMITALL PATRIOT ET 13P
REMITALL MARVEL 78T
 REMITALL MAVREL 105N

RRH MR FELT 3008
 KCF MISS 459 F284
 MM RSM STOCKMASTER 512
 SHF INTERSTATE D03 G80
 REMITALL OLYMPIAN ET 262L
 REMITALL GINGER 23G
 REMITALL ONLINE 122L
 REMITALL MARVEL 202J



REMITALL MARVEL 78T

Dam of lot 5. This prolific producing donor cow and dam of champions is the number one milk EPD cow in the Remitall West herd. She sells as feature lot 17 and has embryo's as lot 31 as well as a daughter that is a full sister to On Fire, Game Day and Chicago that sells as lot 18.

CE	BW	WW	YW	MM	TM	MCE	SC	CW	Stay	MPI	FMI	FAT	REA	MARB
-1.3	3.5	54.3	89.3	22.0	49.2	4.1	1.2	98.4	-	-	-	-0.005	0.43	0.17

BW: 72 lbs

205 Day Wt: 663 lbs adj.

W.D.A 3.23

On Fire 81Y represents a wonderful opportunity to acquire a full brother to the 2012 World Hereford Conference Grand Champion Bull Remitall West Game Day ET 74Y and rising sensation Remitall West Chicago ET 83Y. On Fire would make a great sire to use on heifers with his smooth shoulders, moderate head size and small birth weight. On Fire has the strength of phenotype to make his own mark in the breed and should make many friends sale day. *Selling 3/4 interest and full possession.*



REMITALL WEST GAME DAY ET 74Y

2012 WHC Grand Champion Bull.
 Full brother to lot 5 On Fire 81Y.



REMITALL-W GAME WINNER ET 88Y

C02955007

REM 88Y

May 1, 2011

KCF BENNETT 3008 M326
SHF WONDER M326 W18 ET
 SHF GOVERNESS 236G L37

REMITALL PATRIOT ET 13P
REMITALL MARVEL ET 120S

REMITALL MARVEL EUDORA 125E

RRH MR FELT 3008
 KCF MISS 459 F284
 MM RSM STOCKMASTER 512
 SHF INTERSTATE D03 G80
 REMITALL OLYMPIAN ET 262
 REMITALL GINGER 23G
 REMITALL KEYNOTE 20X
 REMITALL ZE MARVEL 106Z



REMITALL MARVEL ET 120S

Dam of lot 6. Marvel 120S was the winner of the champion Progeny of Dam banner at the 2012 World Hereford Conference. She was the dam of both the Sr. heifer calf champion Marvel 12Z lot 20 and Marvel 27Z the Jr. heifer calf champion at the 2012 WHC. Marvel 120S is featured as lot 19 in this sale.

CE	BW	WW	YW	MM	TM	MCE	SC	CW	Stay	MPI	FMI	FAT	REA	MARB
-2.1	2.8	52.1	82.8	18.1	44.2	3.8	1.1	102.2	-	-	-	-0.008	0.54	0.16

BW: 88 lbs

205 Day Wt: 745 lbs adj.

W.D.A 3.63

Game Winner 88Y is going to be a super breeding bull. His awesome phenotype and strong genetic make up put him in elite company. He is fully pigmented, short marked, eye appealing with a moderate birth wt. Maternally this bull comes from one of the strongest and prepotent cow families to come out of the Remitall program. His sire Wonder W18 was the dominant sire of the recent 2012 World Hereford Conference winning 5 division champions and both Get of Sire banners. Maternal sisters to Game Winner took both the Sr. and Jr. heifer calf champion awards at the 2102 WHC. A full sister and full brother to Game Winner sell as lot 21 and lot 16. Game Winner saw natural service at Remitall West. *Selling 3/4 interest and full possession.*



REMITALL MARVEL EUDORA 125E

Grandam of lot 6. Certainly one of the dominant cows all time in the Marvel cow family. She is also the dam of feature lot 8 the 2012 WHC Jr. Bull Calf Champion.



REMITALL-WEST ESPOSITO ET 7Z

C02969081

REM 7Z

January 2, 2012

KCF BENNETT 3008 M326
SHF WONDER M326 W18 ET
 SHF GOVERNESS 236G L37

GHC STAR MOOSE 59M
REMITALL CATALINA ET 135T
 REMITALL CATALINA 24H

RRH MR FELT 3008
 KCF MISS 459 F284
 MM RSM STOCKMASTER 512
 SHF INTERSTATE D03 G80
 WTK 75A CONTINENTAL 66F
 WALPOLE PHILIS 13F
 MM RSM STOCKMASTER 512
 REMITALL CATALINA 139C



REMITALL WEST ESPOSITO ET 7Z
 Pictured here winning the 2012 WHC
 Sr. Bull Calf Champion.

CE	BW	WW	YW	MM	TM	MCE	SC	CW	Stay	MPI	FMI	FAT	REA	MARB
-0.6	4.1	52.2	85.1	10.4	36.5	1.2	1.2	109.9	-	-	-	-0.014	0.56	0.04

BW: 85 lbs

205 Day Wt: 745 lbs adj.

W.D.A 3.63

Esposito has been a favorite here at Remitall West from day one. He combines great length of body with volume and muscle shape. His moderate birth weight and natural smoothness make him a great candidate to use on heifers. A full sister Catalina 77Y was the 2012 WHC Jr. champion female. Another full sister is featured as lot 25. Being a grandson of the breed legend female Catalina 24H and sired by the dominant young sire Wonder guarantees Esposito 7Z will be a breeding powerhouse. *Selling 1/2 interest and 1/2 possession.*



REMITALL CATALINA ET 135T

Dam of lot 7 and lot 30. One of the star donor cows in the Remitall West program and dam of two division champions at the 2012 WHC.



REMITALL-WEST CHELIOS ET 32Z

C02969079

REM 32Z

February 6, 2012

REMITALL EMBRACER 8E
REMITALL ONLINE 122L
 REMITALL CATALINA 24H

REMITALL KEYNOTE 20X
REMITALL MARVEL EUDORA 125E
 REMITALL ZE MARVEL 106Z

REMITALL ACME 10A
 PLAIN LAKE BELLE 20X 117P 5B
 MM RSM STOCKMASTER 512
 REMITALL CATALINA 139C
 REMITALL TEAMSTER 9T
 REMITALL PATRICIA 99P
 REMITALL TOP HAT 206T
 REMITALL WENDY 99W



REMITALL MARVEL EUDORA 125E

Dam of lot 8. A historic donor cow in the Remitall program and dam of champions.

CE	BW	WW	YW	MM	TM	MCE	SC	CW	Stay	MPI	FMI	FAT	REA	MARB
-0.6	4.4	56.6	95.5	17.5	45.8	5.9	1.0	113.0	-1.0	-	-	-0.020	0.62	0.11

BW: 83 lbs

205 Day Wt: 875 lbs adj.

W.D.A 4.27

Chelios 32Z the 2012 World Hereford Conference Jr. Bull Calf Champion. Chelios is packed full of muscle and natural thickness. A special combination of two parents (Online 122L X Marvel 125E) that were amongst the best to ever come out of the Remitall program. This is a proven winning combination. A full brother Platinum 127P was the 2004 Agribition Reserve Grand Champion Bull and a full sister Marvel 102N was the 2004 Canadian Jr. National Grand Champion Female. *Selling 3/4 interest and full possession.*



REMITALL MARVEL 102N

2004 Canadian Jr. National Grand Champion Female, full sister to lot 8 Chelios 32Z.



REMITALL-WEST SUTTER ET 30Z

C02969077

REM 30Z

February 6, 2012

HARVIE TRAVELER 69T
HARVIE TAILOR MADE ET 7W
 HARVIE MISS FIREFLY 51F

KAIRURU ABERDEEN 03 0047
 HARVIE PEARL 129P
 HARVIE DEYNOTE 61D
 HARVIE MISS NYLON 1Y
 MM STOCKMASTER 092
 MM MISS MASTER 977
 REMITALL BOOMER 46B
 REMITALL MARVEL AURA 41A

MM RSM STOCKMASTER 512
REMITALL MARVEL 170J
 REMITALL MARVEL ELBERTA 83E



REMITALL MARVEL 170J

Dam of lot 9 . Marvel 170J was the 1999 Canadian National Sr. Champion Female. Marvel 170J is also the dam of feature heifer lots 26 and 27.

CE	BW	WW	YW	MM	TM	MCE	SC	CW	Stay	MPI	FMI	FAT	REA	MARB
-3.3	6.2	55.9	89.4	20.5	48.5	1.6	0.7	104.8	-1.9	-	-	-0.012	0.52	-0.07

BW: 98 lbs

205 Day Wt: 890 lbs adj.

W.D.A 4.34

This is one of the real dynamic bull calves of the sale. He has so much style and charisma. When you get in behind this calf he carries a lot of shape and is very wide pinned. Fully pigmented and with a beautiful hair coat will make him a bona fide contender this fall. His dam Marvel 170J was a long time member of the Remitall donor team and a productive cow to the age of 13. We believe Sutter 30Z will put us another step forward with our Tailor Made line. *Selling 1/2 interest and 1/2 possession.*



HARVIE TAILOR MADE ET 7W

Sire of lot 9 and lots 14, 20, 26, 27. A powerful performance sire that will give you extra pigmentation and style.



REMITALL-WEST BENTLEY 21Z

C02967649

REM 21Z

January 25, 2012

KCF BENNETT 3008 M326
SHF WONDER M326 W18 ET
 SHF GOVERNESS 236G L37

REMITALL ONLINE 122L
REMITALL-WEST MARVEL 24X
 REMITALL MARVEL ET 135S

RRH MR FELT 3008
 KCF MISS 459 F284
 MM RSM STOCKMASTER 512
 SHF INTERSTATE D03 G80
 REMITALL EMBRACER 8E
 REMITALL CATALINA 24H
 REMITALL PATRIOT ET 13P
 REMITALL MARVEL EUDORA 125E



REMITALL WEST MARVEL 24X

Dam of lot 10. Pictured here with Bentley 21Z at side winning the 2012 WHC reserve 2 year old champion female. A future star donor in the Remittal West program.

CE	BW	WW	YW	MM	TM	MCE	SC	CW	Stay	MPI	FMI	FAT	REA	MARB
0.2	3.0	53.7	90.9	18.4	45.3	4.8	1.3	106.9	-	-	157.6	-0.010	0.53	0.16

BW: 70 lbs

205 Day Wt: 766 lbs adj.

W.D.A 3.74

Bentley 21Z is another low birth wt. Wonder son that would be excellent to use on heifers. Bentley 21Z is going to be a maternal gem, can you imagine a herd full of his daughters looking just like his mother and grand mother. Along side his dam they were named the 2012 WHC reserve 2 year old champion female. *Selling 3/4 interest and full possession.*



REMITALL MARVEL ET 135S

Grand dam of lot 10. One of the most beautifully uddered, eye appealing beef cows you will ever see.



REMITALL-WEST TROTTER ET 50Z

C02971073

REM 50Z

February 16, 2012

FHF 8403 STARBUCK 19H
 NJW FHF 9710 TANK 45P
 GV 579 VICTORIA 9710

DR ACHIEVER 8403
 FHF RUTH 162A 18E
 ANHINGA VIC 69R 579
 GV 2B WHITNEY 9533
 SADDLE-VALLEY HEISMAN 203E
 SADDLE-VALLEY GOLDIE 45D
 KLONDIKE 500Z FEDERATION 7C
 SADDLE-VALLEY 921E MAID 975H

SADDLE-VALLEY 203E HAMM 822H
SQUARE-D JAEDEN 257P
 SQUARE-D AMANDA 975K



SQUARE D JAEDON 257P
 Dam of lot 11.

CE	BW	WW	YW	MM	TM	MCE	SC	CW	Stay	MPI	FMI	FAT	REA	MARB
-1.1	4.9	49.2	76.8	25.4	50.0	-0.8	0.5	94.2	-	-	-	-0.016	0.57	-0.09

BW: 98 lbs

205 Day Wt: 877 lbs adj.

W.D.A 4.28

This is a great prospect. Trotter 50Z carries amazing depth of body, thickness, and stoutness of bone. His sire is well respected in the breed and his dam and grand dam are elite contributors to the Square D program. We believe Trotter 50Z will be able to play an important role in the future of the Remitall West breeding program. *Selling 1/2 interest and half possession.*



SQUARE D AMANDA 975K
 Grand dam of lot 11.



12

REMITALL-WEST BUCYK ET 44Z

C02969088

REM 44Z

February 13, 2012

REMITALL ROUTE 66 ET 346R
REMITALL SLEEP EASY 68U
 REMITALL MARVEL ET 120S

GHC STAR MOOSE 59M
REMITALL CATALINA ET 135T
 REMITALL CATALINA 24H

MC RANGER 9615
 REMITALL CATALINA 24H
 REMITALL PATRIOT ET 13P
 REMITALL MARVEL EUDORA 125E
 WTK 75A CONTINENTAL 66F
 WALPOLE PHILIS 13F
 MM RSM STOCKMASTER 512
 REMITALL CATALINA 139C



REMITALL CATALINA ET 135T

Dam of lot 12. Catalina 135T produced two division champions at the 2012 WHC and has additional progeny that sell as lot 7 and lot 25.

CE	BW	WW	YW	MM	TM	MCE	SC	CW	Stay	MPI	FMI	FAT	REA	MARB
-2.3	3.9	60.9	90.2	11.6	42.1	0.5	0.9	119.5	-2.2	-	-	-0.017	0.61	0.03

BW: 97 lbs

205 Day Wt: 826 lbs adj.

W.D.A 4.03

You will really admire the structure and presence Bucyk carries. He has a wonderful stoutness of bone, balance, depth of body and a beautiful head carriage. His pedigree offers an exciting combination of the Marvel cow family with a double shot of Catalina 24H. Please note Bucyk 44Z does have a small dime size white tick in his back. His sire Sleep Easy 68U was the high selling bull calf from the 2008 Remitall dispersal at \$38,000. Sleep Easy is now a member of Alta Genetics herd sire battery with semen being used world wide. *Selling 3/4 interest and full possession.*



REMITALL CATALINA 24H

Grand dam of lot 12. This former Canadian National Champion and record selling female has produced more National Champions and is as influential a female as there is in the Hereford breed. Her influence in this sale is unprecedented.



13

REMITALL-WEST BOURQUE ET 38Z

Registration Pending REM 38Z February 8, 2012

NJW FHF 9710 TANK 45P
NJW 45P 139J FULL TANK 134S
 SDL VLY 7C SERENADE 139J

KLONDIKE 500Z FEDERATION 7C
SQUARE-D AMANDA 975K
 SADDLE-VALLEY 921E MAID 975H

FHF 8403 STARBUCK 19H
 GV 579 VICTORIA 9710
 KLONDIKE 500Z FEDERATION 7C
 SVR 393Y SUNRISE 326F
 GK FED EX
 GK SPIRIT QUEEN 42A
 WOOLFORD SVR BRICK 921E
 SVR RUSHMORE'S BEAUTY 241E



SQUARE D AMANDA 975K

Dam of lot 13. Elite donor female from Square D.

CE	BW	WW	YW	MM	TM	MCE	SC	CW	Stay	MPI	FMI	FAT	REA	MARB
-2.1	5.9	59.0	92.3	17.6	47.1	-1.6	-8	108.3	-	-	-	0.009	0.64	-0.10

BW: 94 lbs

205 Day Wt: 883 lbs adj.

W.D.A 4.31

This bull calf possesses the ultimate in carcass design. He carries a massive amount of muscle content and shape. Sired by the popular sire Full Tank and from one of the elite matrons of the Square D herd ensure there is great breeding value in Bucyk. *Selling 3/4 interest and full possession.*



NJW 45P 139J FULL TANK 134S

Sire of lot 13 and feature female lots 24 and 33.



14 **REMITALL-WEST SHANAHAN ET 15Z**

C02969074 REM 15Z January 7, 2012

HARVIE TRAVELER 69T
HARVIE TAILOR MADE ET 7W
 HARVIE MISS FIREFLY 51F

REMITALL MEDALLION 58M
REMITALL CATALINA ET 380P
 REMITALL CATALINA 24H

KAIRURU ABERDEEN 03 0047
 HARVIE PEARL 129P
 HARVIE DEYNOTE 61D
 HARVIE MISS NYLON 1Y
 REMITALL KOOTENAY 9K
 EASTON 20X DELLA 15E
 MM RSM STOCKMASTER 512
 REMITALL CATALINA 139C



REMITALL CATALINA ET 380P

Dam of lot 14. A long time donor female from the Remitall program and direct daughter of the renowned Catalina 24H.

CE	BW	WW	YW	MM	TM	MCE	SC	CW	Stay	MPI	FMI	FAT	REA	MARB
-2.3	5.6	52.6	89.5	17.7	44.0	1.4	0.6	111.8	-2.9	-	-	-0.012	0.45	-0.04

BW: 90 lbs **205 Day Wt:** 813 lbs adj. **W.D.A** 3.97

Shanahan 15Z is a powerful individual that will improve performance and growth. Exceptionally long bodied and very structurally correct. A great combination of two very potent cow families the Catalina's and the Fire Fly's from Harvie Ranching. *Selling 3/4 interest and full possession.*



REMITALL CATALINA 24H

Grand dam of lot 14. Record selling female, former Canadian National Champion Female and Dam of these National Champion sires, Online 122L, Route 66, and Olympian 262L.



REMITALL-WEST BELIVEAU 6Z

C02967632

REM 6Z

January 2, 2012

KCF BENNETT 3008 M326
SHF WONDER M326 W18 ET
 SHF GOVERNESS 236G L37

REMITALL PATRIOT ET 13P
REMITALL MARVEL ET 120S
 REMITALL MARVEL EUDORA 125E

RRH MR FELT 3008
 KCF MISS 459 F284
 MM RSM STOCKMASTER 512
 SHF INTERSTATE D03 G80
 REMITALL OLYMPIAN ET 262L
 REMITALL GINGER 23G
 REMITALL KEYNOTE 20X
 REMITALL ZE MARVEL 106Z



REMITALL MARVEL ET 120S

Dam of Beliveau 6Z lot 15. Marvel 120S was the champion of the Progeny of Dam class at the 2012 WHC. This stellar donor female's influence is a major force in this sale. Her progeny are featured as lot 6, 15, 16, 20 and 21. Marvel 120S herself is feature lot 19.

CE	BW	WW	YW	MM	TM	MCE	SC	CW	Stay	MPI	FMI	FAT	REA	MARB
-2.2	3.1	52.9	84.2	18.1	44.6	3.4	1.1	103.6	-	-	144.0	-0.008	0.54	0.15

BW: 80 lbs

205 Day Wt: 789 lbs adj.

W.D.A 3.85

Beliveau 6Z is the natural calf of donor female Marvel 120S. A great individual that is fully pigmented, long bodied, eye appealing with a birth wt. that makes him very attractive to use on heifers. This young bull has herd bull stamped all over him. He has full brothers that sell as lot 6 and 16. He has a feature full sister that sells as lot 21 possibly one of the best heifer calf prospects born to date at Remitall West. *Selling 3/4 interest and full possession.*



REMITALL MARVEL EUDORA 125E

Grand dam of lot 15 and dam of lots 8 and 19, probably the all time most influential cow from the Marvel Family.



16

REMITALL-WEST LAFLEUR ET 2Z

C02971105

REM 2Z

January 1, 2012

KCF BENNETT 3008 M326
SHF WONDER M326 W18 ET
 SHF GOVERNESS 236G L37

REMITALL PATRIOT ET 13P
REMITALL MARVEL ET 120S
 REMITALL MARVEL EUDORA 125E

RRH MR FELT 3008
 KCF MISS 459 F284
 MM RSM STOCKMASTER 512
 SHF INTERSTATE D03 G80
 REMITALL OLYMPIAN ET 262L
 REMITALL GINGER 23G
 REMITALL KEYNOTE 20X
 REMITALL ZE MARVEL 106Z



REMITALL MARVEL ET 120S Dam of lot 16. Marvel 120S represents the ultimate in what we are looking for in a donor female. She was the winner of the 2012 WHC Produce of Dam Class and was the dam of both the WHC's Sr. heifer calf and Jr. heifer calf champions. Marvel 120S is featured as lot 19 and has progeny selling as lots 6, 15, 16, 20, and 21.

CE	BW	WW	YW	MM	TM	MCE	SC	CW	Stay	MPI	FMI	FAT	REA	MARB
-2.1	2.8	52.1	82.8	18.1	44.2	3.8	1.1	102.2	-	-	-	-0.008	0.54	0.16

BW: 84 lbs

205 Day Wt: 785 lbs adj.

W.D.A 3.83

Lafleur 2Z is a rugged masculine looking calf that says I'm all herd bull. A great genetic package that carries full pigmentation, is short marked and has a birth weight very suitable to use on heifers. He has full brothers that sell as lot 6 and lot 15. His full sister that sells as lot 21 is a bona fide future star. *Selling 3/4 interest and full possession. Scurred.*



REMITALL WEST MARVEL ET 1Z
 Lot 21- one of our favorite heifer calves. A real genetic gem and full sister to lots 6, 15, 16 and maternal sister to feature lot 20.



REMITALL MARVEL 78T

C02896389

NGA 78T

February 5, 2007

REMITALL OLYMPIAN ET 262L
REMITALL PATRIOT ET 13P
 REMITALL GINGER 23G

REMITALL ONLINE 122L
REMITALL MAVREL 105N
 REMITALL MARVEL 20J

REMITALL GOVERNOR 236G
 REMITALL CATALINA 24H
 CIRCLE-D WRANGLER 832W
 PLAIN LAKE BELLE 20X 117P 5B
 REMITALL EMBRACER 8E
 REMITALL CATALINA 24H
 REMITALL ENERGIZER 153E
 REMITALL CHICO MARVEL 56C



REMITALL WEST GAME DAY ET 74Y

2012 World Hereford Conference Grand Champion Bull, son of Marvel 78T lot 17. He has two special full sibs that sell as lots 5 and 18.

CE	BW	WW	YW	MM	TM	MCE	SC	CW	Stay	MPI	FMI	FAT	REA	MARB
-4.3	4.7	61.1	98.6	28.3	58.9	4.3	1.0	98.7	0.8	179.4	146.5	0.003	0.33	0.21

BW: 80 lbs

205 Day Wt: 635 lbs adj.

W.D.A 3.10

Imagine the possibilities this elite donor cow offers. Already the dam of a World Champion bull Game Day 74Y, is the number one milk EPD female in the Remitall West herd, is proven to moderate birth wts. and proven to leave daughters the same quality as her, five of which are in the Remitall West herd. Marvel 78T has done it all and she is still a young cow in the prime of her life. Marvel 78T has an impressive ave. 205 day weaning index of 119 on her first two natural calves. She has a full sister to Game Day 74Y at side that is just like her and will be retained for the Remitall West herd. Marvel 78T has two feature full sibs to Game Day 74Y that sell as lot 5 and lot 18 and embryo's that sell as lot 31. Marvel 78T sells bred to the very exciting mating of May 12th to JDH 10S Yankee 39X.



MISTY RIVER MARVEL 7W

A sensational daughter of Marvel 78T that is working in the Remitall West herd.



REMITALL WEST CHICAGO ET 83Y

A son of Marvel 78T that is creating a lot of stir in Eastern Canada where he resides. He is owned with Dorbay P.H. ON and BrnC P.H. NB.



18

REMITALL-WEST MARVEL ET 5Z

C02969080

REM 5Z

January 2, 2012

KCF BENNETT 3008 M326
SHF WONDER M326 W18 ET
 SHF GOVERNESS 236G L37

REMITALL PATRIOT ET 13P
REMITALL MARVEL 78T
 REMITALL MAVREL 105N

RRH MR FELT 3008
 KCF MISS 459 F284
 MM RSM STOCKMASTER 512
 SHF INTERSTATE D03 G80
 REMITALL OLYMPIAN ET 262L
 REMITALL GINGER 23G
 REMITALL ONLINE 122L
 REMITALL MARVEL 202J



REMITALL WEST GAME DAY ET 74Y
 2012 World Hereford Conference
 Grand Champion Bull, full brother to
 lot 18.

CE	BW	WW	YW	MM	TM	MCE	SC	CW	Stay	MPI	FMI	FAT	REA	MARB
-1.3	3.5	54.3	89.3	22.0	49.2	4.1	1.2	98.4	-	-	-	-0.005	0.43	0.17

BW: 78 lbs

205 Day Wt: 701 lbs adj.

W.D.A 3.42

Parting with this full sister to Game Day 74Y is really tough. It is so hard to come up with special heifers like this that are both phenotypically and genetically great. This female has been a stand out from day one and a favorite of many who have seen her this summer. She is extremely long sided, thick, and represents the ultimate in femininity. The story is already started, think of what the rest could hold. In keeping with our theme to offer you only our elite, here she is Marvel 5Z.



REMITALL MARVEL 78T

Dam of lot 18 and lot 5. Dam of herd sires Game Day 74Y and Chicago 83Y. One of our most special donors, she sells as lot 17 with embryo's selling as lot 31.



REMITALL MARVEL ET 120S

C02881168

NGA 120S

February 15, 2006

REMITALL OLYMPIAN ET 262L
REMITALL PATRIOT ET 13P
 REMITALL GINGER 23G

REMITALL KEYNOTE 20X
REMITALL MARVEL EUDORA 125E
 REMITALL ZE MARVEL 106Z

REMITALL GOVERNOR 236G
 REMITALL CATALINA 24H
 CIRCLE-D WRANGLER 832W
 PLAIN LAKE BELLE 20X 117P 5B
 REMITALL TEAMSTER 9T
 REMITALL PATRICIA 99P
 REMITALL TOP HAT 206T
 REMITALL WENDY 99W



REMITALL MARVEL ET 120S

The winner of the 2012 World Hereford Conference Champion Progeny of Dam class. Pictured here winning the banner are Sr. Heifer Calf Champion Marvel 12Z - lot 20 and Jr. Heifer Calf Champion Marvel 27Z.

CE	BW	WW	YW	MM	TM	MCE	SC	CW	Stay	MPI	FMI	FAT	REA	MARB
-6.0	3.4	56.6	85.7	20.4	48.7	3.7	0.8	106.2	-2.0	155.0	135.2	-0.003	0.54	0.19

BW: 89 lbs **205:** 691 lbs adj. **YW:** 862 lbs adj. **W.D.A** 3.37

There is not enough superlatives to describe Marvel 120S. This superior donor cow has produced herd sires, champions, and is a near ideal design for a productive female. Marvel 120S was the winner of the Champion Progeny of Dam class at the 2012 World Hereford Conference. She was the dam of both the Sr. Heifer Calf and Jr. Heifer Calf Champions at the 2012 World Hereford. She has averaged 10 good embryo's per flush on three flushes. Marvel 120S garnered a stellar ave. weaning wt. ratio of 122 on her first two natural calves. Her natural calf for 2012 sells as lot 20, ET calves sell as lots 6, 16, 20, and 21. Marvel 120S sells with the special mating of June 2 to JDH 10S Yankee 39X.



REMITALL SLEEP EASY 68U

Herd sire, son of Marvel 120S. Sleep Easy 68U is a member of the Alta Genetics herd sire battery. Sleep Easy 68U is the sire of feature bull calf lot 12.



REMITALL-WEST MARVEL ET 12Z

C02969083

REM 12Z

January 4, 2012

HARVIE TRAVELER 69T
HARVIE TAILOR MADE ET 7W
 HARVIE MISS FIREFLY 51F

REMITALL PATRIOT ET 13P
REMITALL MARVEL ET 12OS
 REMITALL MARVEL EUDORA 125E

KAIRURU ABERDEEN 03 0047
 HARVIE PEARL 129P
 HARVIE DEYNOTE 61D
 HARVIE MISS NYLON 1Y
 REMITALL OLYMPIAN ET 262L
 REMITALL GINGER 23G
 REMITALL KEYNOTE 20X
 REMITALL ZE MARVEL 106Z



REMITALL WEST MARVEL ET 12Z
 Pictured winning the 2012 World Hereford Conference Sr. Heifer Calf Championship.

CE	BW	WW	YW	MM	TM	MCE	SC	CW	Stay	MPI	FMI	FAT	REA	MARB
-5.3	4.9	57.9	93.7	21.6	50.6	2.8	0.7	112.1	-1.7	-	-	-0.010	0.56	0.01

BW: 84 lbs

205 Day Wt: 781 lbs adj.

W.D.A 3.81

This is one of the most dynamic heifer calves to come from the Remitall West program. Marvel 12Z is a bona fide contender as was evidenced by her first show ring appearances where she was heifer calf champion and reserve grand champion female at the 2012 WHC Canadian Jr. National and Sr. heifer calf champion of the open WHC show. Marvel 12Z represents the ultimate in phenotype design with amazing depth of body, natural thickness in a beautiful profile. She is a genetic masterpiece combining the power of the Marvel cow family with the elite Fire Fly cow family. The potential for greatness starts here.



REMITALL WEST MARVEL ET 12Z
 Pictured winning the 2012 World Hereford Conference Jr. show Reserve Grand Champion Female.



21

REMITALL-WEST MARVEL ET 1Z

C02971104

REM 1Z

January 1, 2012

KCF BENNETT 3008 M326
SHF WONDER M326 W18 ET
 SHF GOVERNESS 236G L37

RRH MR FELT 3008
 KCF MISS 459 F284
 MM RSM STOCKMASTER 512
 SHF INTERSTATE D03 G80
 REMITALL OLYMPIAN ET 262L
 REMITALL GINGER 23G
 REMITALL KEYNOTE 20X
 REMITALL ZE MARVEL 106Z

REMITALL PATRIOT ET 13P
REMITALL MARVEL ET 120S
 REMITALL MARVEL EUDORA 125E



REMITALL MARVEL ET 120S

Dam of lot 21. Elite donor cow for Remitall West and winner of the 2012 WHC Champion Progeny of Dam class. She sells as lot 19.

CE	BW	WW	YW	MM	TM	MCE	SC	CW	Stay	MPI	FMI	FAT	REA	MARB
-2.1	2.8	52.1	82.8	18.1	44.2	3.8	1.1	102.2	-	-	-	-0.008	0.54	0.16

BW: 80 lbs

205 Day Wt: 697 lbs adj.

W.D.A 3.40

An absolute beauty and potential future donor female. Picked as a favorite by many of the visitors to Remitall West this summer. Marvel 1Z personifies a broodiness and femininity not often seen in a heifer calf her age. Full brothers to Marvel 1Z sell as lot 6 and lot 16. Every herd would benefit from an elite individual from the Marvel cow family.



REMITALL WEST GAME WINNER ET 88Y

Lot 6 and full brother to Marvel 1Z lot 21.

2012 WHC Rancher Day Grand Champion Female



REMITALL RITA 13T

C02896300

NGA 13T

January 20, 2007

REMITALL OLYMPIAN ET 262L
REMITALL PATRIOT ET 13P
 REMITALL GINGER 23G

REMITALL HERITAGE 89H
REMITALL RITA 246K
 REMITALL EMPRESS RITA 66E

REMITALL GOVERNOR 236G
 REMITALL CATALINA 24H
 CIRCLE-D WRANGLER 832W
 PLAIN LAKE BELLE 20X 117P 5B
 MM RSM STOCKMASTER 512
 PLAIN LAKE BELLE 20X 117P 5B
 REMITALL BOOMER 46B
 REMITALL RITA 81R



REMITALL WEST CONSTRUCTOR 21X

Son of Rita 13T lot 22. Constructor 21X sells as lot 4 and was the 2011 Canadian Jr. National Grand Champion Bull and was a 2011 Agribition class winner.

CE	BW	WW	YW	MM	TM	MCE	SC	CW	Stay	MPI	FMI	FAT	REA	MARB
-7.3	6.4	67.1	108.0	23.6	57.2	1.3	1.1	125.9	-0.1	175.3	151.5	0.001	0.53	0.21

BW: 94 lbs

205 Day Wt: 682 lbs adj.

W.D.A 3.30

Rita 13T is the prototypical design of the kind of cow it takes to turn out strong herd bulls. Cows with strength of bone, extra capacity, udder quality, milk flow and breed character. Rita 13T has all these traits in abundance. Rita 13T carries a superb ave. weaning index of 114 on her first three natural calves. Rita 13T has two feature sons selling as lead off lot 1 and lot 4. Rita 13T is set to be a prolific embryo producer giving 19 good embryo's on her first flush. A unique design to Rita's pedigree is she traces both top and bottom of her pedigree to breed legend female Belle 5B dam of herd sires Embracer 8E and Heritage 89H and elite donor female Ginger 23G. Rita 13T a champion female admired by both commercial and purebred breeders alike. Rita 13T sells with the same mating that created the super lead off lot 1 bull, Eberle 29Z. Selling bred June 4th to JDH 10S Yankee 39X.



REMITALL WEST EBERLE 29Z

Son of Rita 13T lot 22. Eberle 29Z is the lead off lot 1 bull in the sale. Eberle was at side when Rita 13T was crowned the 2012 WHC Rancher Day Grand Champion female.



REM DORBAY MISS HAYLEE 8Z

C02967637

REM 8Z

January 2, 2012

KCF BENNETT 3008 M326
SHF WONDER M326 W18 ET
 SHF GOVERNESS 236G L37

MHPH 13P STETSON 102S
STAR MISS HAYLEE 39U
 BLAIR-ATHOL 417L HAYLEE 11S

RRH MR FELT 3008
 KCF MISS 459 F284
 MM RSM STOCKMASTER 512
 SHF INTERSTATE D03 G80
 REMITALL PATRIOT ET 13P
 MHPH MS 24K NITA 109N
 KJ 520E VICTOR 417L
 HAROLDSON'S HAYLEE 68M 66P



STAR MISS HAYLEE 39U

The dam of lot 23. Purchased as a two year old female for \$7500 in the 2010 Medonte Highlands Sale this female has been a master of production.

CE	BW	WW	YW	MM	TM	MCE	SC	CW	Stay	MPI	FMI	FAT	REA	MARB
0.0	2.6	47.0	76.2	20.1	43.6	3.4	1.0	89.7	-	-	136.8	-0.007	0.44	0.08

BW: 82 lbs

205 Day Wt: 735 lbs adj.

W.D.A 3.59

I don't recall ever raising a heifer calf with the sheer amount of volume and natural fleshing ability this female has. Miss Haylee 8Z carries these traits in an attractive package as well winning the Res. Sr. Heifer Calf Championship at the 2012 World Hereford Conference. Her dam Miss Haylee 39U is a power in milk production, her first bull calf had a 205 day weaning wt. of 1020 lbs. If you want pigmentation, profile and capacity lot 23 is your heifer. Owned with Dorbay Polled Herefords ON.



REM DORBAY MISS HAYLEE 8Z

Pictured here winning the 2012 WHC Res. Sr. heifer calf championship, she was also a member of the Champion Jr. Get of Sire for Wonder W18.



24

REMITALL-WEST AMANDA ET 45Z

Registration Pending REM 45Z February 14, 2012

NJW FHF 9710 TANK 45P
NJW 45P 139J FULL TANK 134S
 SDL VLY 7C SERENADE 139J

KLONDIKE 500Z FEDERATION 7C
SQUARE-D AMANDA 975K
 SADDLE-VALLEY 921E MAID 975H

FHF 8403 STARBUCK 19H
 GV 579 VICTORIA 9710
 KLONDIKE 500Z FEDERATION 7C
 SVR 393Y SUNRISE 326F
 GK FED EX
 GK SPIRIT QUEEN 42A
 WOOLFORD SVR BRICK 921E
 SVR RUSHMORE'S BEAUTY 241E



SQUARE D AMANDA 975K

Elite donor cow from the renown Square D herd and dam of lot 24.

CE	BW	WW	YW	MM	TM	MCE	SC	CW	Stay	MPI	FMI	FAT	REA	MARB
-2.1	5.9	59.0	92.3	17.6	47.1	-1.6	0.8	108.3	-	-	-	0.009	0.64	-0.10

BW: 88 lbs **205 Day Wt:** 797 lbs adj. **W.D.A** 3.89

An absolute beauty of a heifer. Easy fleshing, deep sided, eye appealing and broody looking. A unique pedigree combination combining the best of the NJW herd and the Square D herd. This female has the tools to be both a contender and a future donor female.



NJW 45P 139J FULL TANK 134S

Popular herd sire for Bar H Land and Cattle, sire of lot 24 and lot 28



REMITALL-WEST CATALINA ET 9Z

C02969082

REM 9Z

January 3, 2012

KCF BENNETT 3008 M326
SHF WONDER M326 W18 ET
 SHF GOVERNESS 236G L37

GHC STAR MOOSE 59M
REMITALL CATALINA ET 135T
 REMITALL CATALINA 24H

RRH MR FELT 3008
 KCF MISS 459 F284
 MM RSM STOCKMASTER 512
 SHF INTERSTATE D03 G80
 WTK 75A CONTINENTAL 66F
 WALPOLE PHILIS 13F
 MM RSM STOCKMASTER 512
 REMITALL CATALINA 139C



REMITALL WEST CATALINA ET 77Y
 Full sister to lot 25 and Jr. Champion
 Female 2012 WHC.

CE	BW	WW	YW	MM	TM	MCE	SC	CW	Stay	MPI	FMI	FAT	REA	MARB
-0.6	4.1	52.2	85.1	10.4	36.5	1.2	1.2	109.9	-	-	-	-0.014	0.56	0.04

BW: 85 lbs

205 Day Wt: 627 lbs adj.

W.D.A 3.06

A real genetic gem in a broody, broody, package. Lots of folks this summer remarked this female was most likely to be the next super cow. Both a full sister and full brother were division champions at the 2012 World Hereford Conference. Her grand dam is none other than the record setting Catalina 24H possibly the most influential female in recent times in the breed. Sired by Wonder W18 the dominant sire at the 2012 World Hereford Conference has this female looking like the ticket to success.



REMITALL WEST ESPOSITO ET 7Z
 Full brother to lot 25 and Sr. Bull Calf
 Champion 2012 WHC.



26

REMITALL-WEST MARVEL ET 14Z

C02969073

REM 14Z

January 6, 2012

HARVIE TRAVELER 69T
HARVIE TAILOR MADE ET 7W
 HARVIE MISS FIREFLY 51F

MM RSM STOCKMASTER 512
REMITALL MARVEL 170J
 REMITALL MARVEL ELBERTA 83E

KAIRURU ABERDEEN 03 0047
 HARVIE PEARL 129P
 HARVIE DEYNOTE 61D
 HARVIE MISS NYLON 1Y
 MM STOCKMASTER 092
 MM MISS MASTER 977
 REMITALL BOOMER 46B
 REMITALL MARVEL AURA 41A



REMITALL MARVEL 170J

A long time dynamic donor in the Remitall herd, dam of lot 26, lot 27 and lot 9. Marvel 170J was the 1999 Canadian National Sr. Champion female.

CE	BW	WW	YW	MM	TM	MCE	SC	CW	Stay	MPI	FMI	FAT	REA	MARB
-3.3	6.2	55.9	89.4	20.5	48.5	1.6	0.7	104.8	-1.9	-	-	-0.012	0.52	-0.07

BW: 98 lbs

205 Day Wt: 797 lbs adj.

W.D.A 3.89

A powerful performance female with incredible length of body. A wonderful genetic combination bringing together the Marvel's the stars of the Remitall program with the Fire Fly's the stars of Harvie Ranching. This heifer has the strength to make a difference. Her feature full brother sells as lot 9 and full sister as lot 27.



REMITALL WEST SUTTER ET 30Z

Feature lot 9 and full brother to lot 26 and lot 27.



REMITALL-WEST MARVEL ET 31Z

C02969078

REM 31Z

February 6, 2012

HARVIE TRAVELER 69T
HARVIE TAILOR MADE ET 7W
 HARVIE MISS FIREFLY 51F

MM RSM STOCKMASTER 512
REMITALL MARVEL 170J
 REMITALL MARVEL ELBERTA 83E

KAIRURU ABERDEEN 03 0047
 HARVIE PEARL 129P
 HARVIE DEYNOTE 61D
 HARVIE MISS NYLON 1Y
 MM STOCKMASTER 092
 MM MISS MASTER 977
 REMITALL BOOMER 46B
 REMITALL MARVEL AURA 41A



REMITALL MARVEL 170J

A long time member of the Remitall donor team and dam of lot 27, lot 26 and lot 9. Marvel 170J was the 1999 Canadian National Sr. Champion Female.

CE	BW	WW	YW	MM	TM	MCE	SC	CW	Stay	MPI	FMI	FAT	REA	MARB
-3.3	6.2	55.9	89.4	20.5	48.5	1.6	0.7	104.8	-1.9	-	-	-0.012	0.52	-0.07

BW: 85 lbs

205 Day Wt: 682 lbs adj.

W.D.A 3.33

This is a really nice put together young female. So feminine through her neck and shoulders, clean in her lines, angular in her structure. A great design of a show prospect with the maternal genetics to be a producer. Impressive full sibs to this female sell as lot 9 and lot 26.



HARVIE TAILOR MADE ET 7W

A sire that will increase performance, maternal traits and pigmentation. Sire of lots 27, 26, 20, 14, and 9.



28

REMITALL-WEST AMANDA ET 39Z

Registration Pending

REM 39Z

February 8, 2012

NJW FHF 9710 TANK 45P
NJW 45P 139J FULL TANK 134S
 SDL VLY 7C SERENADE 139J

FHF 8403 STARBUCK 19H
 GV 579 VICTORIA 9710
 KLONDIKE 500Z FEDERATION 7C
 SVR 393Y SUNRISE 326F
 GK FED EX
 GK SPIRIT QUEEN 42A
 WOOLFORD SVR BRICK 921E
 SVR RUSHMORE'S BEAUTY 241E

KLONDIKE 500Z FEDERATION 7C
SQUARE-D AMANDA 975K
 SADDLE-VALLEY 921E MAID 975H



SQUARE D AMANDA 975K

Matron and elite donor in the Square D herd. Dam of lot 28 and lot 24

CE	BW	WW	YW	MM	TM	MCE	SC	CW	Stay	MPI	FMI	FAT	REA	MARB
-2.1	5.9	59.0	92.3	17.6	47.1	-1.6	0.8	108.3	-	-	-	0.009	0.64	-0.10

BW: 92 lbs

205 Day Wt: 752 lbs adj.

W.D.A 3.67

One of the longest sided, cleanest fronted heifers in the offering. Amanda 39Z also possesses a lot of natural muscle shape and thickness. A powerful heifer that has the genetics and the phenotype to be a future donor candidate. Her full sister sells as lot 24.



NJW 45P 139J FULL TANK 134S

Herd sire for Bar H Land and Cattle.
 Sire of lot 28 and lot 24.



REMITALL-WEST WSF POLLY 58Z

C02967656

REM 58Z

February 24, 2012

KCF BENNETT 3008 M326
SHF WONDER M326 W18 ET
 SHF GOVERNESS 236G L37

RRH MR FELT 3008
 KCF MISS 459 F284
 MM RSM STOCKMASTER 512
 SHF INTERSTATE D03 G80
 REMITALL PATRIOT ET 13P
 REMITALL RITA 91H
 REMITALL LANDSLIDE 161L
 REMITALL CHARME POLLY 163C

REMITALL SUPER DUTY 42S
REMITALL-WEST POLLY 70X
 REMITALL POLLY 262N



REMITALL WEST POLLY 70X

Two year old dam of lot 29. Polly 70X was campaigned last year in the junior shows by Isaac Latimer where she placed 2nd in class at the Canadian Jr. National. Owned with Wooden Shoe Farms ID.

CE	BW	WW	YW	MM	TM	MCE	SC	CW	Stay	MPI	FMI	FAT	REA	MARB
-2.5	5.3	50.1	87.6	18.1	43.2	2.9	1.2	106.4	-	-	148.6	-0.010	0.41	0.09

BW: 87 lbs

205 Day Wt: 666 lbs adj.

W.D.A 3.25

A super young heifer that is a natural calf on just a two year old heifer. Fancy and easy on the eyes give Polly the look of a future contender. Combining Wonder W18 the dominant sire at the recent 2012 World Hereford Conference with a young Super Duty sired two year old female gives you some of the freshest, cutting edge genetics the industry has to offer. I'm certain the astute cattlemen will see the potential this heifer has. Owned with Wooden Shoe Farms ID.



SHF WONDER M326 W18 ET

Sire of lot 29 and lots 30, 25, 23, 21, 18, 16, 15, 10, 7, 6 and 5. Wonder was the dominant sire at the recent 2012 World Hereford Conference siring five division champions and both champion Get of Sire classes.



30

REMITALL-WEST WSF CATALINA 68Z

C02967658

REM 68Z

March 4, 2012

REMITALL PRECISION 455P
REMITALL-WEST LUGER 53X
 SQUARE-D RITA 352U

REMITALL SUPER DUTY 42S
REMITALL-WEST CATALINA 74X
 REMITALL CATALINA 39T

REMITALL MEDALLION 58M
 REMITALL CATALINA ET 69L
 REMITALL SUPER DUTY 42S
 AMW COUNTRY GIRL 25M
 REMITALL PATRIOT ET 13P
 REMITALL RITA 91H
 BNC 122L OMNI 128N
 REMITALL CATALINA 105L



REMITALL WEST CATALINA 74X

Two year old dam of lot 30. Super Duty females are making tremendous young cows every where I have seen them. Owned with Wooden Shoe Farms ID.

CE	BW	WW	YW	MM	TM	MCE	SC	CW	Stay	MPI	FMI	FAT	REA	MARB
-5.0	7.7	61.1	99.2	25.0	55.6	1.7	0.9	112.3	-2.2	-	139.2	0.004	0.33	0.08

BW: 87 lbs

205 Day Wt: 615 lbs adj.

W.D.A 3.00

Another very fancy made young heifer. First heifer to sell sired by Luger 53X and on a Super Duty sired two year old. You will appreciate the freshness and the future this female looks like she has to her. Tremendously correct and sharp fronted. Catalina 68Z has one of the most interesting pedigrees of the entire offering tracing twice to the young sire Super Duty 42S and lining up twice to the Rita's and the Catalina's. A design of unparalleled predictability and greatness. Owned with Wooden Shoe Farms ID.



REMITALL CATALINA 105L

Great grand dam of lot 30. A tremendously productive cow from the Remitall program.

31**REMITALL MARVEL 78T x CB 57U CAN DOO 102Y****CB 57U CAN DOO 102Y**
RVP STAR 533P CAN-AM ET 57U
HF 74M LIMELIGHT LADY 42P**REMITALL MARVEL 78T**
REMITALL PATRIOT ET 13P
REMITALL MAVREL 105NSTAR BRIGHT FUTURE 533P ET
STAR BONNIE BETH 54N
STAR MKS LIMELIGHT 288G
HF 43K DUSTY LADY 74M
REMITALL OLYMPIAN ET 262L
REMITALL GINGER 23G
REMITALL ONLINE 122L
REMITALL MARVEL 202J

CE BW WW YW MM TM MCE SC CW Stay MPI FMI FAT REA MARB

-3.7 4.6 54.0 85.1 25.2 52.2 3.8 0.7 94.7 -0.4 163.0 134.5 -0.003 0.28 0.08

Selling 2 Frozen Exportable Embryos

Here is a great opportunity to be on the very cutting edge of today's genetics. This combination brings together the Dam (Marvel 78T) of the 2012 World Hereford Conference Grand Champion Bull mated to Can Doo 102Y the 2012 World Hereford Conference Reserve Grand Champion Bull. It doesn't get any more at the forefront than this!

32**DORBAY MISS WHITNEY 411W x SHF WONDER M326 W18 ET****SHF WONDER M326 W18 ET**
KCF BENNETT 3008 M326
SHF GOVERNESS 236G L37**DORBAY MISS WHITNEY 411W**
REMITALL ROUTE 66 ET 346R
DOR VIEW HAWKS GAL 19RRRH MR FELT 3008
KCF MISS 459 F284
MM RSM STOCKMASTER 512
SHF INTERSTATE D03 G80
MC RANGER 9615
REMITALL CATALINA 24H
REMITALL NIGHTHAWK 100N
EJM MISS KOOTENAY GAL 54M

CE BW WW YW MM TM MCE SC CW Stay MPI FMI FAT REA MARB

-1.0 4.1 53.7 92.2 14.8 41.6 2.3 1.3 113.9 - - 165.4 -0.018 0.56 0.18

Selling 3 Frozen Exportable Embryos

We can't wait to see the results of this mating. Bringing together Miss Whitney 411W the 2011 Canadian Jr. National and 2011 Canadian Western National Grand Champion Female together with Wonder the dominant sire of the recent 2012 World Hereford Conference, you can see why we're excited here! These offspring are going to be flat out good.

33**REMITALL RITA 13T x SHF WONDER M326 W18 ET****SHF WONDER M326 W18 ET**
KCF BENNETT 3008 M326
SHF GOVERNESS 236G L37**REMITALL RITA 13T**
REMITALL PATRIOT ET 13P
REMITALL RITA 246KRRH MR FELT 3008
KCF MISS 459 F284
MM RSM STOCKMASTER 512
SHF INTERSTATE D03 G80
REMITALL OLYMPIAN ET 262L
REMITALL GINGER 23G
REMITALL HERITAGE 89H
REMITALL EMPRESS RITA 66E

CE BW WW YW MM TM MCE SC CW Stay MPI FMI FAT REA MARB

-2.8 4.3 59.2 97.6 19.5 49.1 2.6 1.4 112.0 - - 153.8 -0.003 0.60 0.22

Selling 3 Frozen Exportable Embryos

Rita 13T and Wonder compliment each other perfectly. Imagine the possibilities of putting together Rita 13T the 2012 World Hereford Conference Rancher Day Grand Champion Female with Wonder W18 the dominant sire of the 2012 World Hereford Conference where he sired five division champions and both of the Champion Get of Sire classes.

**REMITALL MARVEL 78T**
Dam of lot 31**CB 57U CAN DOO 102Y**
Sire of lot 31**DORBAY MISS WHITNEY 411W**
Dam of lot 32**SHF WONDER M326 W18 ET**
Sire of lot 32**REMITALL RITA 13T**
Dam of lot 33

Elite Total Outcross Genetics From Australia



MERAWAH SHAMROCK C130

Consigned by
Murphy Ridge Farms
 Henry Braun
 Abbotsford BC
 604 302 0545

Majestic Cattle Co.
 Jim Henderson
 Stettler AB
 403 741 7378

James Wolters
 Australia
 61 428 228 153



MERAWAH SHAMROCK C130 x MERAWAH THUNDER W31

MERAWAH APOLLO T13
MERAWAH THUNDER W31
 MERAWAH URSULA R113

MERAWAH NORTH WEST A12
MERAWAH SHAMROCK C130
 MERAWAH SHAMROCK Y108

4K SURVIVOR
 MERAWAH BRT IRISH MAID K83
 GK BEAUDACIOUS 82C
 MERAWAH URSULA K42
 MERAWAH THUNDER W31
 MERAWAH SHAMROCK N89
 MERAWAH MISSOURI
 MERAWAH SHAMROCK M60

Australian EBVs	CE	BW	200 Day Wt	400 Day Wt	600 Day Wt	Milk	SC
	-3.6	+6.8	+36	+55	+75	+14	+0.6



MERAWAH THUNDER W31

Sire of lot 34 embryo's

Selling 4 Frozen Exportable Embryos

A unique and special consignment to this offering are these two lots of select embryo's from Australia. The possibilities abound with these outcross genetics. Lot 34 embryo's are from Shamrock C130 the high selling female with heifer calf at side at \$28,000 in the renown record setting Merawah Dispersal. Shamrock C130 is a beautiful female in her design with femininity, udder quality with milk flow, pigmentation, and a proven power house cow family. The sire of lot 34 Thunder W31 is a powerful performance sire and is a trait leader for 200 and 400 day wts. on breed plan EBV's. Thunder W31 sons in Australia boast the incredible \$7500 ave. selling price over a five year span.



MERAWAH SHAMROCK C130 x YALGOO BOULDER Z250

BOWEN UNIQUE U161
YALGOO BOULDER Z250
 YALGOO BETTE T185

MERAWAH NORTH WEST A12
MERAWAH SHAMROCK C130
 MERAWAH SHAMROCK Y108

4K KFF KAZZ
 BOWEN ROLLINA N61
 YALGOO GUARDIAN N91
 YALGOO BETTE N16
 MERAWAH THUNDER W31
 MERAWAH SHAMROCK N89
 MERAWAH MISSOURI
 MERAWAH SHAMROCK M60

Australian EBVs	CE	BW	200 Day Wt	400 Day Wt	600 Day Wt	Milk	SC
	-0.9	+5.0	+32	+49	+67	+12.5	+1.9



YALGOO BOULDER Z250

Sire of lot 35 embryo's

Selling 4 Frozen Exportable Embryos

This exciting embryo lot 35 from Australia combines the high selling \$28,000 Shamrock C130 female with the dynamic young sire from down under Boulder Z250. Boulder was the 2006 Australian National Jr. Champion bull and is proving to be one of the top sires for both productive females and show champions in Australia. These are outcross genetics for North America at it's finest.

Australian EBV Averages

CE - 0.3
 BW 4.3
 200 day wt. 27
 400 day wt. 43
 600 day wt. 62
 Milk 12
 SC 1.5

General Sale Information

Time & Place

1:00 p.m. Saturday, October 13, 2012: Remittal West Sale Barn - West of Olds, Alberta on Hwy 27 to Range Road 20 and 3 miles south. East side of the road. Sale Barn phone number is (403) 556-2960.

Hotel

Ramada Hotel, Olds (403) 507-8349
Best Western Motel, Olds (403) 556-5900
Sportsman Motel, Olds (403) 556-3315
Siesta Motel, Olds (403) 556-3374
Circle Five Motel, Olds (403) 556-7755
Didsbury Country Inn, Didsbury (403) 335-8088

Accommodations

The Remittal West Sale Barn is located just 45 minutes north of the Calgary International Airport. Olds also has a small aircraft Municipal Airport.

Airports

Cattle Viewing

Cattle will be on display all day Friday, October 12, 2012 and Saturday, October 13, 2012. Please join us Friday evening for food and social and lunch sale day.

Sale Staff

Auctioneer: Ryan Dorran: (403) 507-6483
Ring service: Ted Serhienko, *Saskatoon, SK:* (306) 9333-4200 / (306) 221-2711
Craig Flewelling, *Olds, AB:* (403) 224-2111 / (403) 556-0515
Joe Rickabaugh, *Hereford World:* (816) 842-3757
Ben Brillhart, *Hereford World:* (406) 947-2222
Livestock Insurance: DJH & Associates: (403) 782-3888
Sale Day Contacts: Bryan Latimer: (403) 556-0301
Annette Latimer: (403) 556-0607

Terms & Conditions

Terms: The terms of the sale are cash or cheque, payable at par at the sale location unless satisfactory credit or invoicing arrangements have been made prior to the sale. The right of property shall not pass until after full settlement has been made.

Delivery: Instructions for delivery must be given at time of settlement. No cattle will be released until after the conclusion of the sale. Each animal becomes the risk of the purchaser as soon as sold; therefore, buyers are urged to insure animals at full value.

Guarantee: The cattle will carry the guarantee as recommended by the Canadian Hereford Association. Remittal West stands behind all animals sold in the sale. Any defects will be announced.

Frozen Embryos: Due to different management practices, technicians and other factors, there is no guarantee on the conception rate of any frozen embryos. It is guaranteed that the purchaser will receive the number of embryos purchased and that said embryos are the mating listed in this catalogue. Only number one and number two grade embryos were frozen and they have been stored at an accredited storage facility.

Announcements: Announcements made by the auctioneer on sale day supersede any printed material.

Liability: The owners, their employees, sale staff & representatives accept no liability for any accidents that may occur (although this is rare at a cattle sale) and persons who attend do so at their own risk.

Real-time viewing and bidding is available from www.liveauctions.tv.

Buyers must create an account at least 2 days prior to the sale. Contact Jill Mader at 403-990-9187 or Brad Fahrmeier at 816-392-9241 if you have questions or require assistance.

LiveAuctions.TV

The Canadian Hereford Association is pleased to present this catalogue on behalf of Remittal West

Reference Only



SHF WONDER M326 W18 ET

2011 Canadian National Agribition Senior Champion Bull

C02947701

W18

February 7, 2009

RRH MR FELT 3008

KCF BENNETT 3008 M326

KCF MISS 459 F284

MM RSM STOCKMASTER 512

SHF GOVERNESS 236G L37

SHF INTERSTATE D03 G80

FELTONS 517

RRH MS VICT 6191

FELTONS 459

KCF MISS X4 B156

MM STOCKMASTER 092

MM MISS MASTER 977

SHF INTERSTATE 20X D03

GK LADY BANNER 563T

CE	BW	WW	YW	MM	TM	MCE	SC	CW	Stay	MPI	FMI	FAT	REA	MARB
1.8	2.3	51.2	87.1	15.3	40.9	3.9	1.7	98.1	-	-	156.0	-0.007	0.66	0.22

Wonder was the dominant sire at the 2012 World Hereford Conference where he sired the Grand Champion Bull, five division champions and both of the Champion Get of Sire classes. *Seven available 10 straws for \$1000.00, no certificates required.*



REMITALL WEST GAME DAY ET 74Y

2012 WHC Grand Champion Bull. Sire Wonder. Owned with Bacon Herefords and Glengrove Farms.



REMITALL WEST CATALINA ET 77Y

2012 WHC Jr. Champion Female. Sire Wonder.



REMITALL WEST ESPOSITO 7Z

2012 WHC Sr. Bull Calf Champion. Sire Wonder. Sells as lot 7



2012 WHC Champion Jr. Get of Sire



2102 WHC Champion Get of Sire



REMITALL WEST CHICAGO ET 83Y

Sire Wonder.

Owned with BrC and Dorbay PH.



REM DORBAY MISS HAYLEE

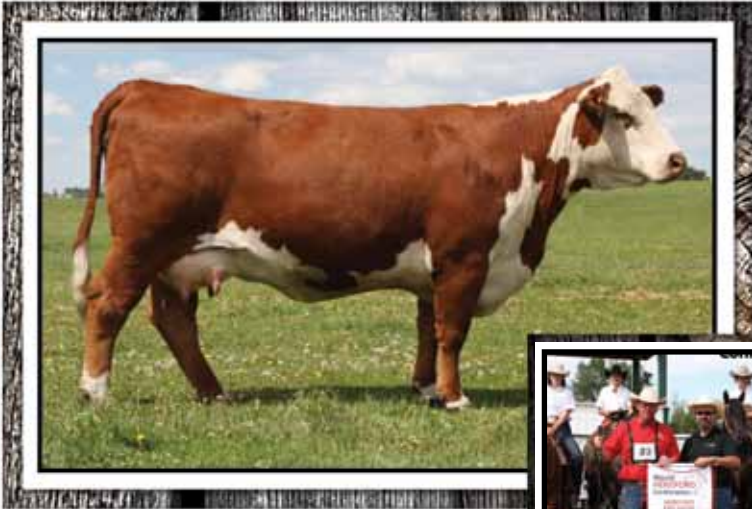
2012 WHC Res. Sr. Heifer Calf Champion.

Sells as lot 23. Sire Wonder.



Remitall West Game Day ET 74Y

2012 World Hereford Conference Grand Champion Bull



Lot 22 - Remitall Rita 13T

2012 World Hereford Conference Rancher Day Grand Champion Female

CANADA POSTES
POST CANADA



Postage paid
Addressed
Admail

Port payé
Médiaposte
avec adresse

1006834